



Filtek™

Supreme
Flowable Restorative

**Go with the flow
with confidence.**



Request a Demo

Do more with a flowable you trust.

Designed for improved comfort and injection molding, our award-winning 3M™ Filtek™ Supreme Flowable Restorative is now available for expanded indications. You can use this popular, clinically proven flowable for all classes of direct restorations. Plus, take advantage of our updated syringe, with its ergonomic design and finer, bubble-reducing tip. A single-use capsule design is also available to reduce the risk of cross-contamination.

Expanded indications

Versatile for an expanded range of indications and techniques, Class I - V.

Reduce bubbles and waste

Virtually no bubbles or material “run-on” during dispensing gives you better control.

Easy to hold and inject

Triangle finger plate and plunger make it quick and easy to personalise your grip.

No more guessing

The blue syringe barrel indicates the remaining material volume. When your syringe is empty, only the white plunger shows.

Precise placement

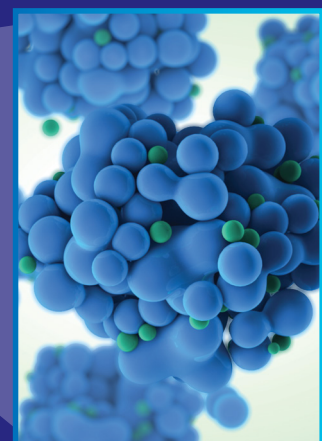
20-gauge cannula is easy to bend without kinking, and 27-gauge cannula enables precise placement in hard-to-reach areas (sold separately).

Excellent adaptation

Excellent adaptation, polish retention and wear resistance.



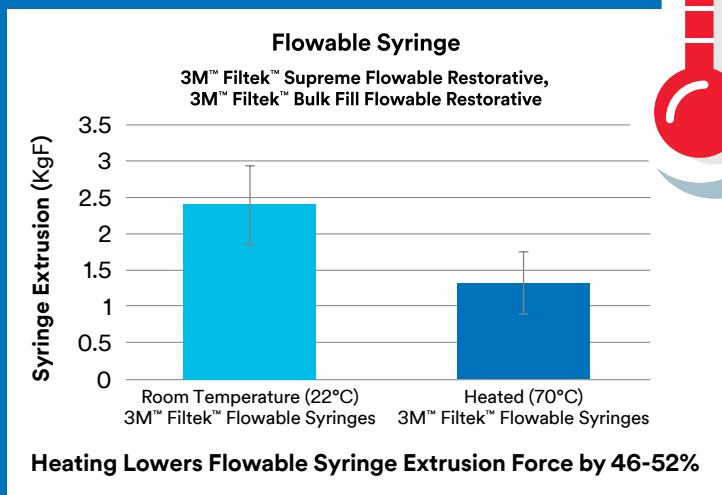
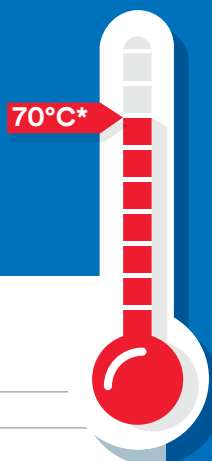
3M's popular flowable is made with TRUE nanotechnology. This patented technology makes the nanoparticles more uniform in size, resulting in excellent wear resistance and polished retention.



Warm with confidence

Why warm 3M Composites?

- Warmed composites are more fluid, for easier handling
- Warming may improve adaptation of 3M composite to tooth structure¹
- Warming lowers extrusion force²



Get performance with peace of mind

Physical Properties Unchanged:³

- Diametral tensile strength
- Flexural modulus
- Flexural strength
- Colour stability
- Depth of cure



Tips for success

You can safely warm Filtek Restoratives in as little as 5 minutes! Follow these general guidelines, and refer to the instructions for use for more information.

DO

DO heat flowable syringes up to 70°C (158°F) for up to 1 hour, up to 25 times.

DO do heat flowable and universal capsules to 70°C (158°F) for up to 1 hour.

DO only use commercially available composite warmer devices.

DO consult the Instructions for Use for more information.

DO NOT

Do **NOT** use heat from a light bulb, microwave, mug warmer or other unapproved heating devices. Consult the Instructions for Use for more information.

*Recommended heating temperature

1 Based on a 3M sponsored in vitro study. 11 dentists placed 88 Class II MOD restorations. Teeth were microscopically exemplified for flaws, defects and voids. Comparisons made between techniques and operators.

2 3M Internal Data

3 When warmed according to our Instructions for Use. Syringes can be warmed up to 70°C, 158°F for up to one hour, up to 25 times. Capsules can be warmed up to 70°C, 158°F for up to one hour.

A shade-matched palette

3M™ Filtek™ Supreme Flowable Restorative shades are formulated to be an **identical match** to 3M™ Filtek™ Universal Restorative and 3M™ Filtek™ Supreme XTE Universal Restorative. (A1, A2, A3, A3.5, A4, B1, B2, C2, D2)



3M™ Filtek™ Supreme Flowable Restorative



3M™ Filtek™ Universal Restorative



3M™ Filtek™ Supreme XTE Universal Restorative



Clinical cases

3M™ Filtek™ Supreme Flowable Restorative offers a smooth transition from material to tooth for aesthetic restorations.



Before



First layer of flowable, prior to light curing



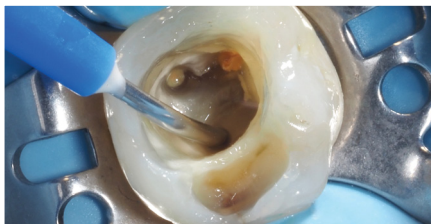
After

Photos courtesy of Dr. Walter Devoto, Santa Margherita Ligure, Italy

Filtek Supreme Flowable Restorative adapts easily and seals the margin.



Before



Flowable placement in a thin layer at the bottom of the access cavity



After

Photos courtesy of Dr. Ivona Bago, Zagreb, Croatia

Expanded Indications (Incremental up to 2 mm)

Class I Class II Class III Class IV

Class V Liner Repair of Indirect (small defects)

Repair Pit & Fissure Sealant Base

Refer to Instructions for Use for full list of indications.
1. Repair of resin and acrylic temporary materials

Ordering information

3M™ Filtek™ Supreme Flowable Restorative Refills

Syringe refills include: 2 – 2 g syringes; 20 x 20G dispensing tips.

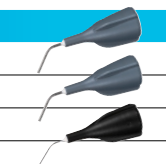


Syringe Refills

Shade	Item No.
A1	6032A1
A2	6032A2
A3	6032A3
A3.5	6032A3.5
A4	6032A4
B1	6032B1
B2	6032B2
C2	6032C2
D2	6032D2
White	6032W
Extra White	6032XW
OA3	6032OA3

3M™ Filtek™ Supreme Flowable Restorative Refills

Item No.	Product Information
3700T	20-gauge, Gray (20)
3700T-100	20-gauge, Gray (100)
3700T27	27-gauge, Black (20)



3M Australia Pty Limited
Building A, 1 Rivett Rd
North Ryde, NSW 2113
1300 363 454
www.3M.com.au

3M New Zealand Limited
94 Apollo Drive
Rosedale, Auckland 0632
0800 808 182
www.3M.co.nz

Request a Demo



3M and Filtek are trademarks of 3M Company. All other trademarks herein are the property of their respective owners. © 3M 2024. All rights reserved. AV011477740.